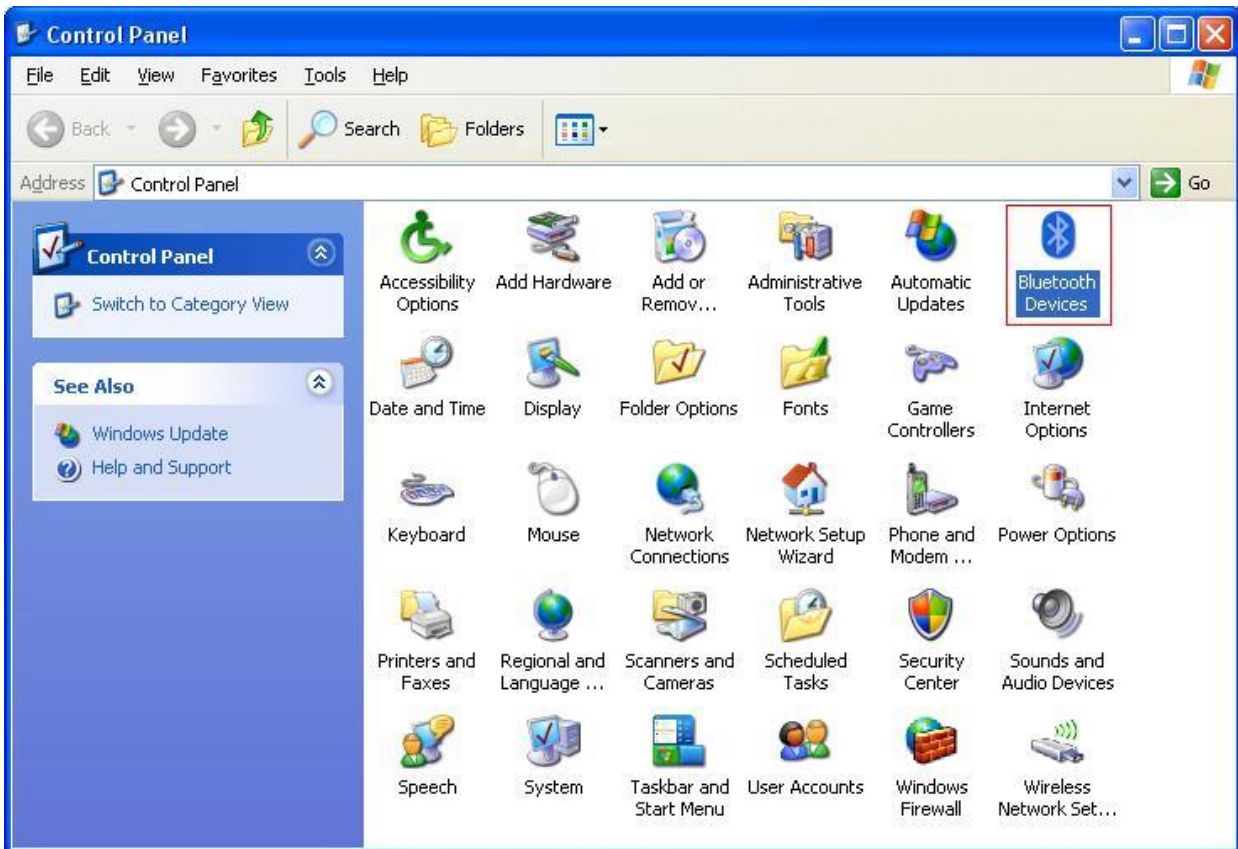


How to connect Nokia 6600 with Oxygen Phone Manager II for Symbian OS phones  
( <http://www.opm-2.com/symbian/> )

If you have already paired your phone, go directly to point 13:

- 1) Open 'My computer' -> 'Control panel' -> 'Switch to classic view' (if not switched) -> 'Bluetooth devices'



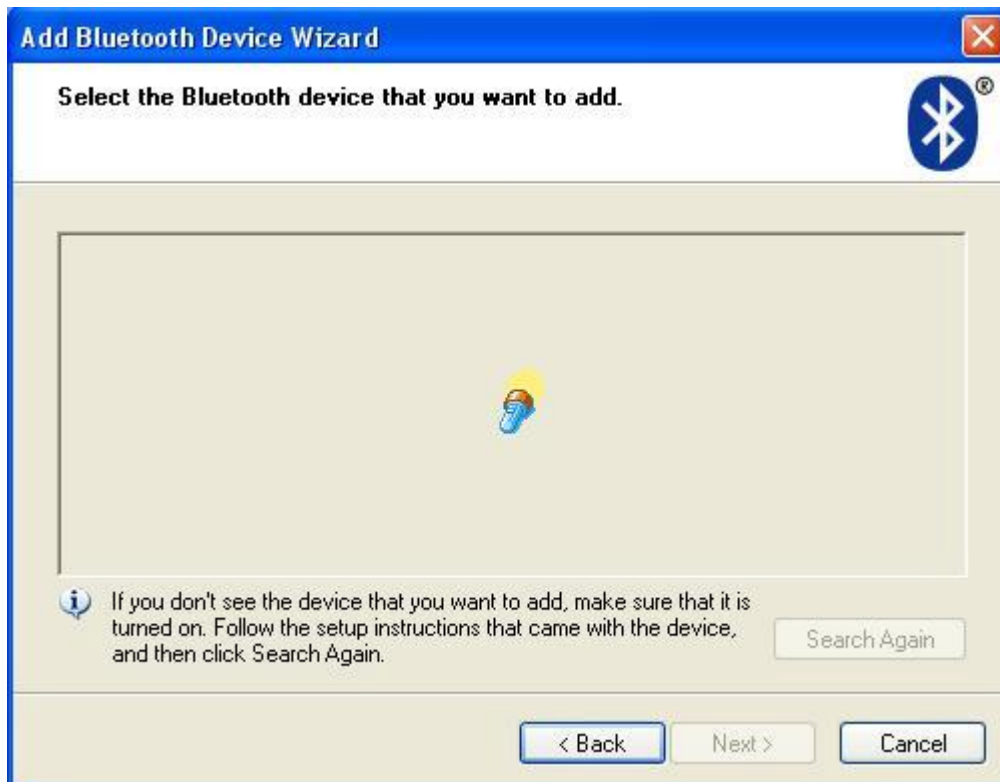
- 2) Open 'Options' bookmark and check all options with swoosh there. Press 'Apply' to accept changes. Don't close Bluetooth settings window:



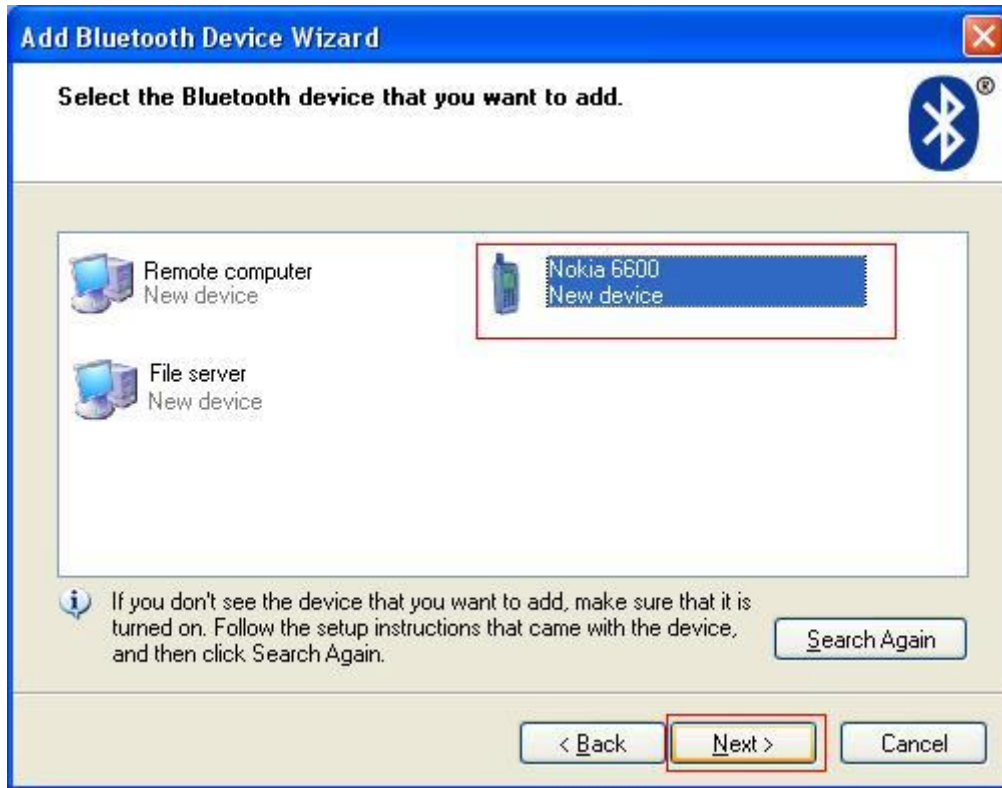
- 3) Turn Bluetooth connection on in your phone in 'Connectivities' folder.
- 4) Switch to 'Devices' bookmark in Bluetooth device settings and press 'Add device' button.
- 5) Then you will see Bluetooth wizard welcome note. Check 'My device is set up and ready to connect' option and press 'Next' button.



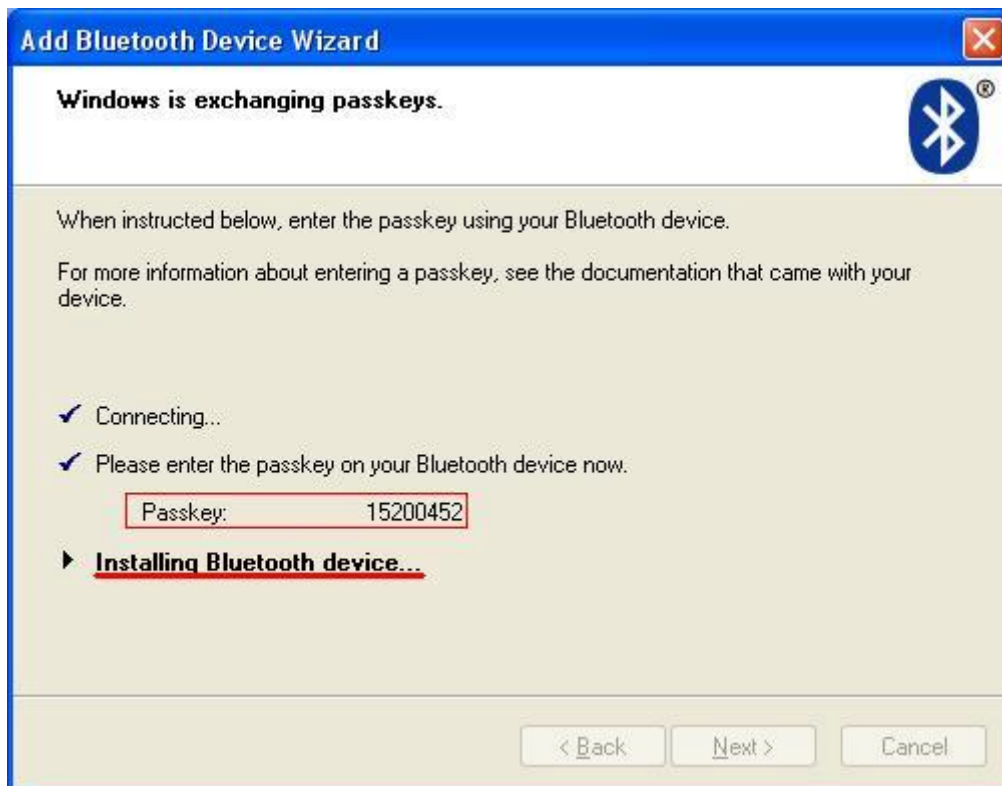
- 6) The system will start searching for Bluetooth devices nearby your PC:



- 7) After the wizard finds the phone, select it in corresponding menu and press 'Next' button:



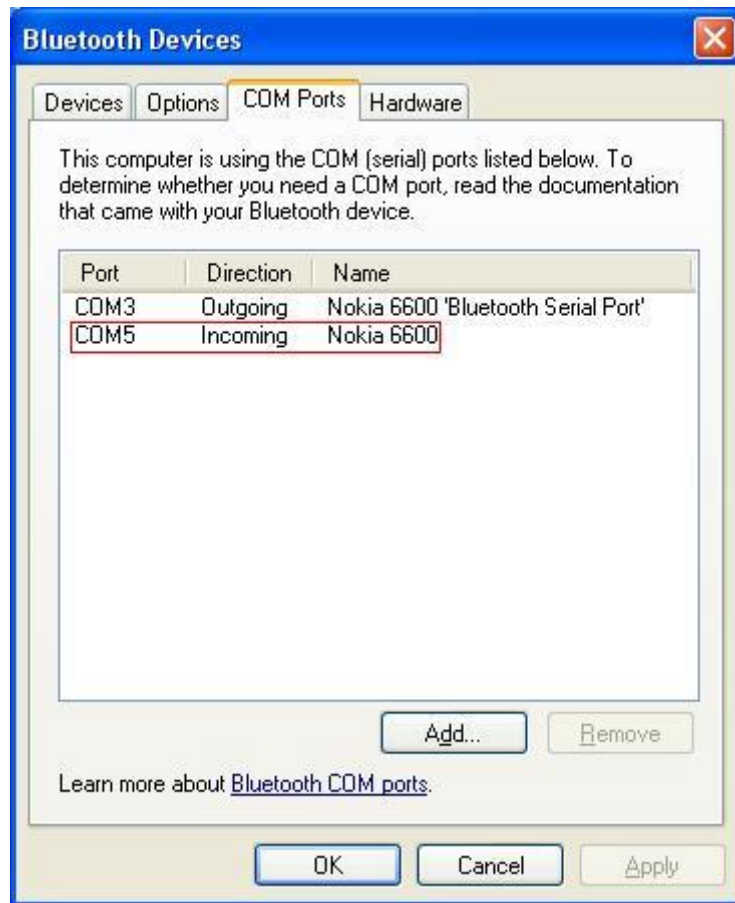
- 8) In the following menu choose the first option, so wizard will generate passcode automatically. Enter the same passcode on your phone's side and the system will initialize connection parameters, accept Bluetooth connection on your phone (if the phone will ask for it).



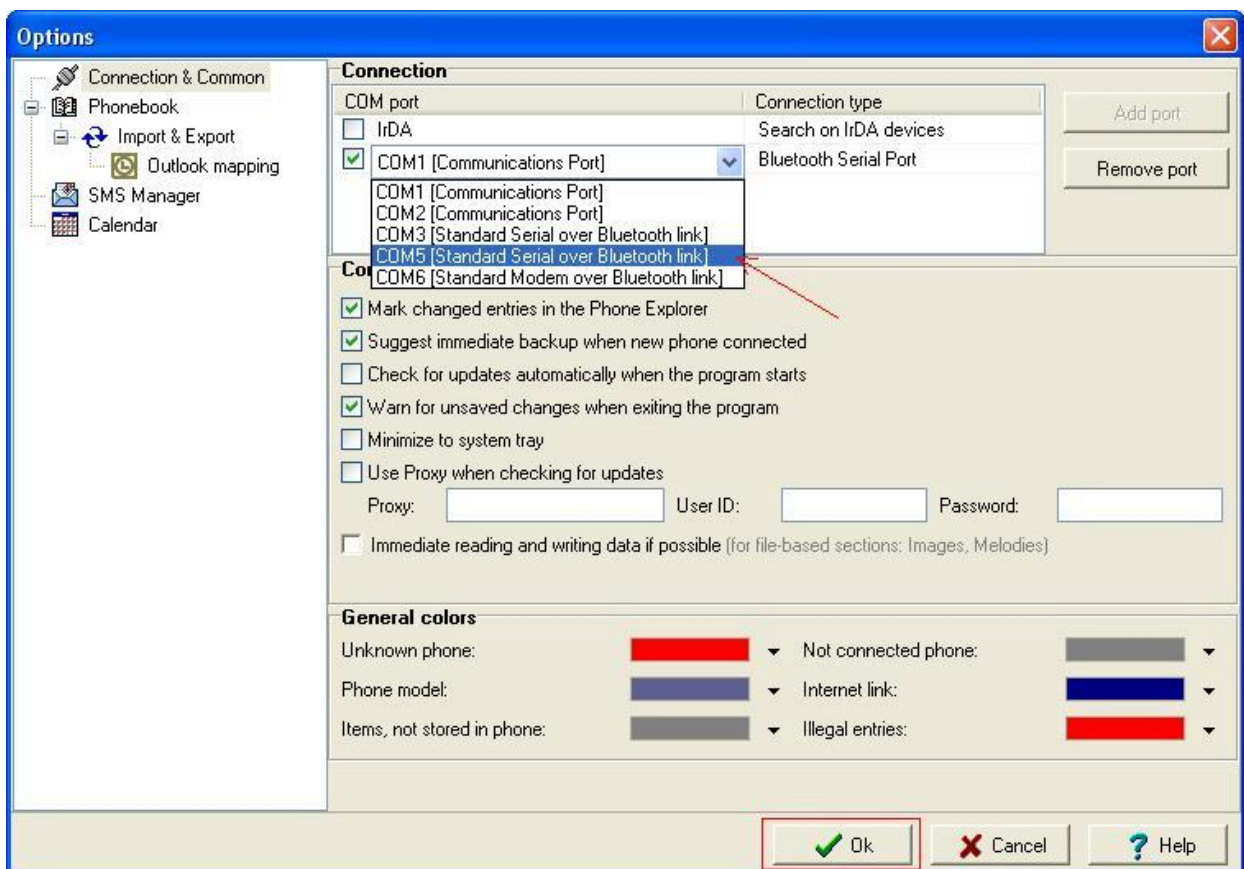
9) To complete Bluetooth wizard press 'Finish' button:



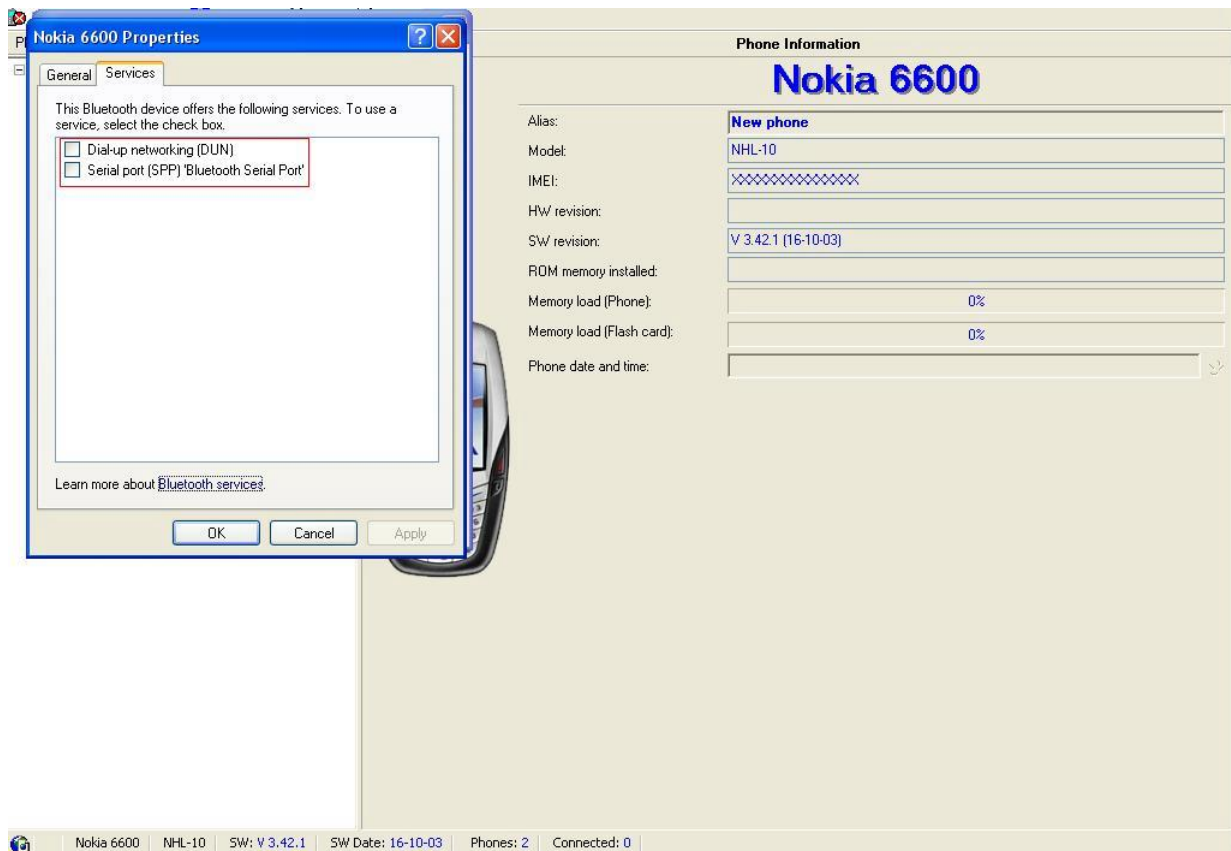
- 10) Now you should transfer OPMAgent.sis file to your phone. Open folder, where you have installed Oxygen Phone Manager II for Symbian OS phones in Windows Explorer. By default, this folder is X:\Program Files\Oxygen\SymbianOPM\Agent\Nokia\, where X: is the drive letter, where your operating system (Windows XP) is installed. Right-click on OPMAgent.sis file and select 'Send to' -> 'Bluetooth device'. In next menu press 'Browse' button and select your phone from the list and transfer OPMAgent.sis to your phone.
- 11) Accept Bluetooth file transfer from PC on your phone and you will see file transfer status bar on your PC Screen.
- 12) After new messages notification appears, go directly to your inbox and install OPMAgent to your phone's memory (and not to MMC card), accept all installation notifications.
- 13) Make sure, that Bluetooth is turned on on your phone.
- 14) Don't start Oxygen Phone Manager II for Symbian OS phones. Start 'OPMAgent' from your phone's main menu and select 'Start BT Exchange'. Make sure, OPMAgent has found your PC. If you cannot find your PC, please, close all programs, that may occupy the connection (disable or uninstall completely Microsoft ActiveSync, Nokia PC Suite or close Oxygen Phone Manager II for Symbian OS phones or close common Oxygen Phone Manager II for non-Symbian phones, if opened), exit OPMAgent, select 'Options' -> 'Start BT Exchange' again and repeat searching for bluetooth devices nearby. After your PC appears in list, select 'Cancel' option. Don't select your PC in OPMAgent this time. This idle step is required for initialization purposes, so you could select your computer directly from list without searching (you will need this feature in step 22 of current instructions). Some phones (such as Nokia 6600) may not require this step, but Nokia N-Gage and N-Gage QD will not connect without this initialization process. This may also apply to any other Symbian-based phones.
- 15) Open 'My computer' -> 'Control panel' -> 'Switch to classic view' (if not switched) -> 'Bluetooth devices' -> 'COM ports bookmark. Here you should remember Bluetooth virtual serial port, assign for incoming connections from Nokia smartphone to your PC. Remember this COM port.



- 16) Run Oxygen Phone Manager II for Symbian phones and open 'Tools' -> 'Options' menu. Here you should set COM port from point 14 (COM 5 in our case). Press 'Ok' to confirm settings.



- 17) Don't close or minimize Oxygen Phone Manager II for Symbian OS phones window, open 'Bluetooth devices' tab once again and place it over 'Phone Explorer' panel. Click once on your Nokia phone and press 'Properties' button. Select 'Services' bookmark, turn all services off here and make sure, that it is positioned, as below:



- 18) After that, open OPMAGENT in your phone's main menu (and not from the application manager) and select 'Options' at the bottom -> Start BT exchange -> don not start searching for Bluetooth devices and jus place cursor over your computer's name. Don't select it: just place cursor over it. Keep your finger on selector (don't press, just keep).
- 19) Pay attention both to your phone screen and to notification area in tray (area near clocks in right bottom part of Windows' desktop).
- 20) Mark 'Serial port (SPP) Bluetooth serial port' service with swoosh and press apply button.
- 21) Right after that in notification area you should see 'Found new hardware: standard serial over Bluetooth link notification'



- 22) Then on phone's screen in the right top corner of the screen you should see black dot (some smartphones may display 'B' (as 'Bluetooth') rune embedded with round brackets), which indicates, that phone has detected connection with PC. In this very moment you should be in time with selecting your PC from list in OPMAGENT on your phone before the next notification appears:

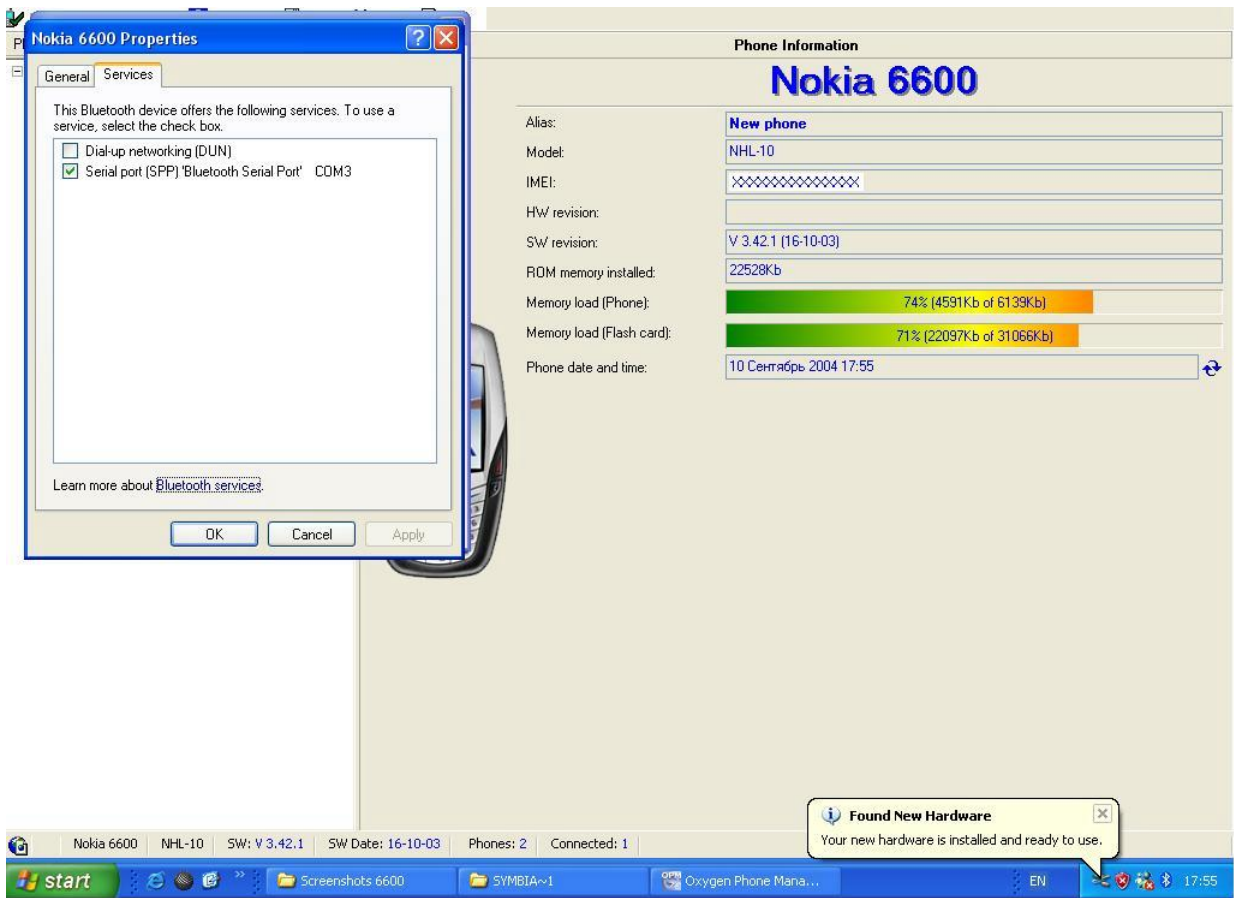


If you select your computer in OPMAGENT after this message has appeared, there will be no connection between your phone and PC.

So the sequence should be the following:

- A) 'Standard serial over Bluetooth link' message appears.
- B) Black dot appears in top right corner on your phone's screen
- C) Select your computer quickly
- D) 'Your new hardware is installed and ready to use' notification appears.

The final result will look as follows:



Now you can close Bluetooth devices window and work with Oxygen Phone Manager II for Symbian OS phones.

Maybe, you will need several tries (2 or 3) to establish successful connection.

These settings are a bit more complicated, then in case of Widcomm stack because of specific Microsoft Bluetooth stack features: after 'Found new hardware' notification appears it forces outgoing 'Bluetooth serial port' connection from PC to phone, while our program uses 'Incoming' connection ( from phone to PC). In this case you have only short time period between black dot appears at first on your phone's screen and 'Your new hardware is installed and ready to use' notification to connect your phone by incoming service. Microsoft Bluetooth stack has some kind of timer which checks incoming connections and if it doesn't find any incoming connection, it turns outgoing 'Bluetooth serial port' automatically and blocks incoming one.

However, as per our tests, when you set Microsoft Bluetooth connection up, it is much more stable, then any driver, that comes with Bluetooth device on CD.